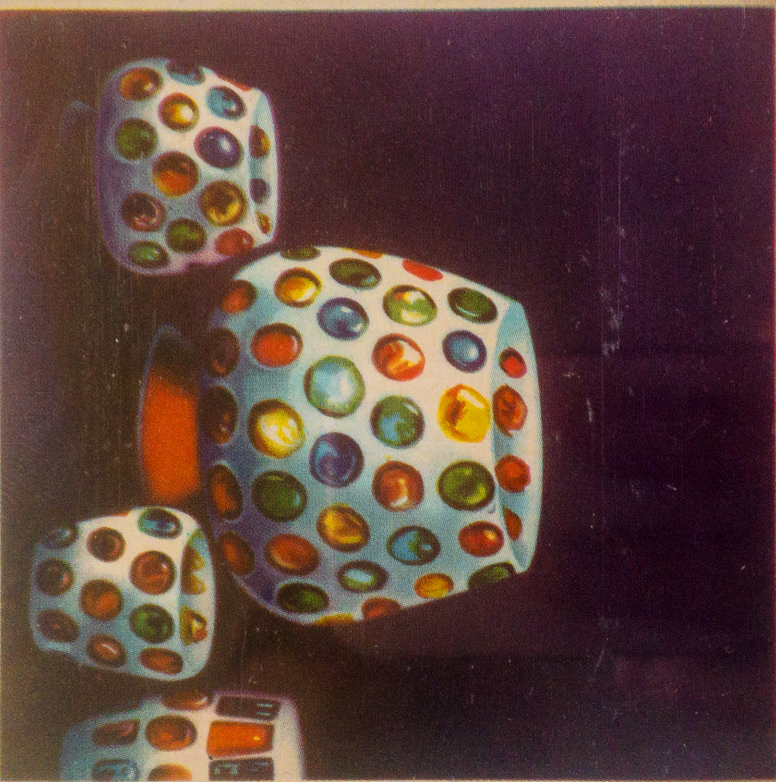


**HOLDING THIS FACE UP**

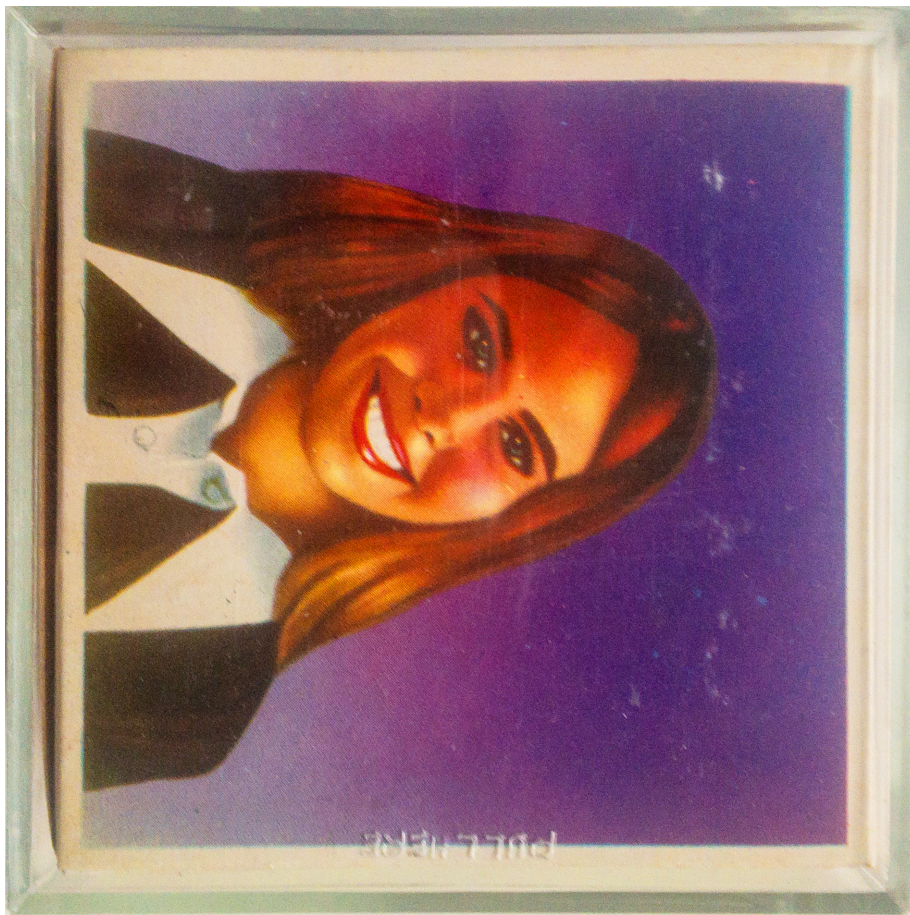
To insert photos place left thumb and forefinger on circular panels. Then place right thumb and forefinger on top and bottom panels. Pull to the right until cube is 2/3 open. Photos can then be inserted into the desired panel section. Squeeze parts together to hold photos securely in place.

MADE IN HONG KONG









PHILIPPE



PHILIPPE

PHILIPPE